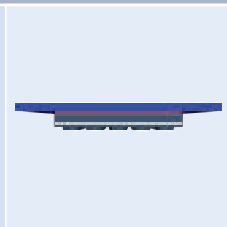
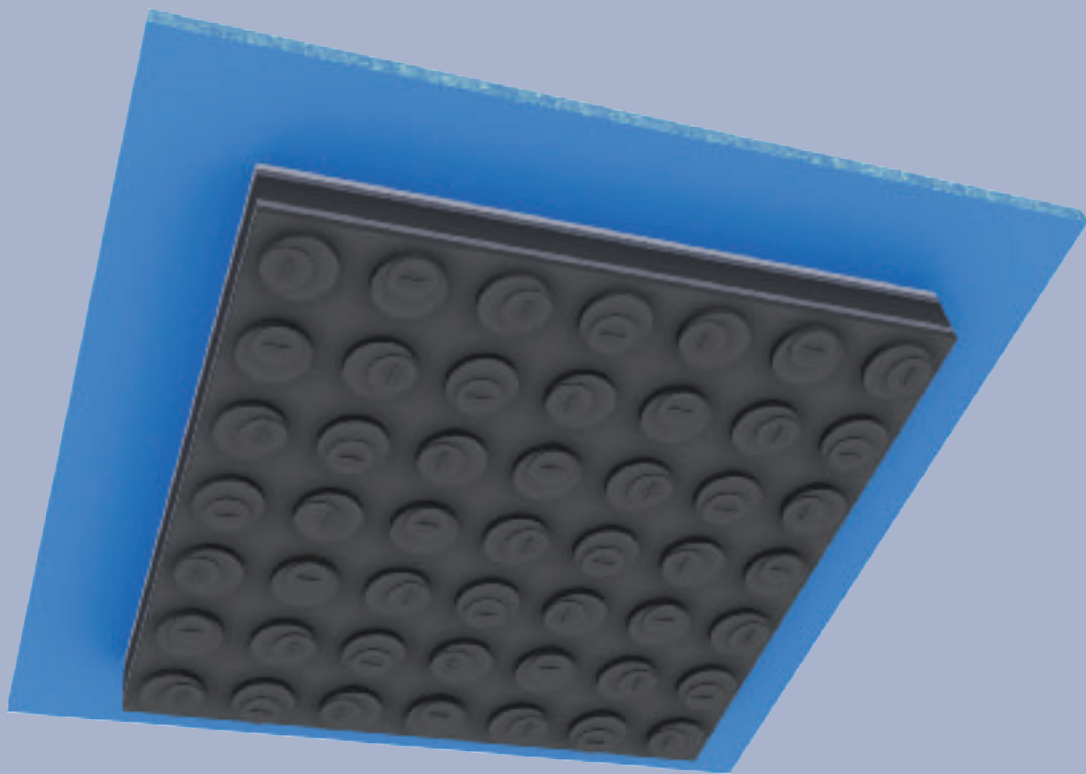


# CIPARALL® SLIDING BEARING



*Elastomeric flexible sliding bearing  
with transverse tensile reinforcement and  
dimensionally stable sliding surface,  
load capacity up to 15 N/mm<sup>2</sup>*

# Product Description

## Contents

	Page	
Product Description	2	The material of the tensile reinforcement defines the type of bearing
Design Chart	3	– Ciparall® Sliding Bearing, ST with steel reinforcement
Edge Distances	4	
Deflection	5	
Form of Delivery, Dimensions	5	
Vertical Installation Installation	6	
Principle	7	
Texts of Tender Document	7	The bearings are marked with additional designations in order to specify more clearly the specific application. For prefabricated construction the designation “BnF” (precast concrete
Friction Coefficients	8	
Test Certificates	9	
Encasings	9	

unit) applies, for in situ construction the designation “OBn” is used, i.e. the bearings are encased with polystyrene and shrink-wrapped to prevent concrete from entering the bearing surface. If at the same time effective fire protection has to be ensured the fire resistance class has to be specified (“F 90” or “F 120”). In that case the bearings are additionally fitted with a Ciflamon-fire protection plate (see page 9). This applies to type “BnF” as well as to type “OBn”.

## Product Description

Calenberg Ciparall® Sliding Bearings combine sliding and deformation properties of the bearing where the sliding action is independent from the deformation. Depending on the requirement bearings of different thicknesses can be selected.

The bearings consist of:

- Rubber layers in combination with vulcanised steel plates and a low-friction PTFE layer that allows movement relative to the slide plate.
- Slide plate of glass fibre reinforced plastic (GRP)

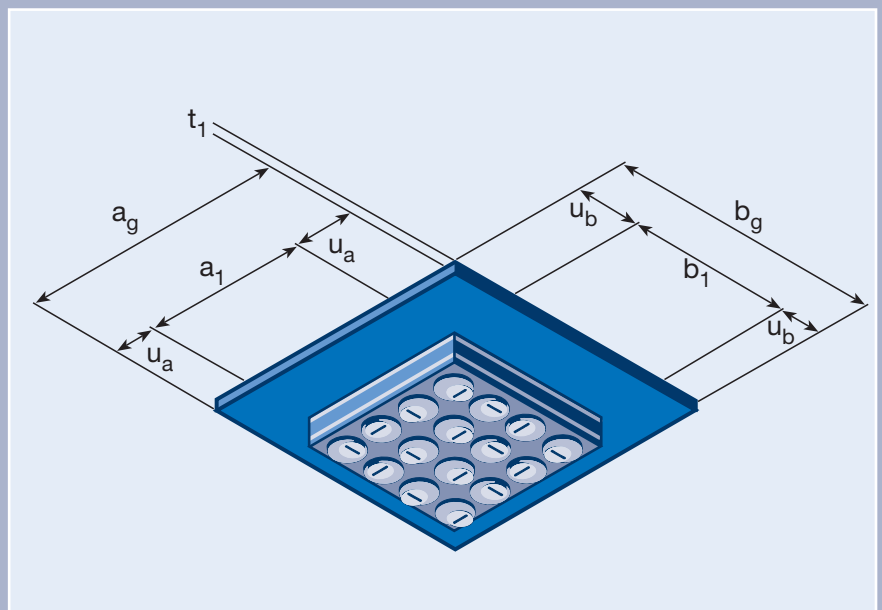


Figure 1. Designation of the individual bearing dimensions

**Ciparall® Sliding Bearing ST; Thickness t = 11, 20, 30 und 40 mm**



Total thickness t [mm]

11

20

30

40

Bearing width a<sub>1</sub> [mm]

$\sigma_{allow}$   
[N/mm<sup>2</sup>]

$\alpha_{allow}$   
[‰]

$\sigma_{allow}$   
[N/mm<sup>2</sup>]

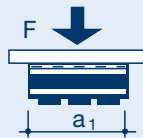
$\alpha_{allow}$   
[‰]

$\sigma_{allow}$   
[N/mm<sup>2</sup>]

$\alpha_{allow}$   
[‰]

$\sigma_{allow}$   
[N/mm<sup>2</sup>]

$\alpha_{allow}$   
[‰]



50	15.0	20.0	7.5	40.0				
60	15.0	16.7	9.0	33.3				
70	15.0	14.3	12.0	28.6				
80	15.0	12.5	12.0	25.0	12.0	40.0		
90	15.0	11.1	13.5	22.2	13.5	38.9		
100	15.0	10.0	15.0	20.0	15.0	35.0	15.0	40.0
110	15.0	9.1	15.0	18.2	15.0	31.8	15.0	40.0
120	15.0	8.3	15.0	16.7	15.0	29.2	15.0	40.0
130	15.0	7.7	15.0	15.4	15.0	26.9	15.0	38.5
140	15.0	7.1	15.0	14.3	15.0	25.0	15.0	35.7
150	15.0	6.7	15.0	13.3	15.0	23.3	15.0	33.3
160	15.0	6.3	15.0	12.5	15.0	21.9	15.0	31.3
170	15.0	5.9	15.0	11.8	15.0	20.6	15.0	29.4
180	15.0	5.6	15.0	11.1	15.0	19.4	15.0	27.8
190	15.0	5.3	15.0	10.5	15.0	18.4	15.0	26.3
200	15.0	5.0	15.0	10.0	15.0	17.5	15.0	25.0
250	15.0	4.0	15.0	8.0	15.0	14.0	15.0	20.0
300	15.0	3.3	15.0	6.7	15.0	11.7	15.0	16.7
350	15.0	2.9	15.0	5.7	15.0	10.0	15.0	14.3
400	15.0	2.5	15.0	5.0	15.0	8.8	15.0	12.5
450	15.0	2.2	15.0	4.4	15.0	7.8	15.0	11.1
500	15.0	2.0	15.0	4.0	15.0	7.0	15.0	10.0
550	15.0	1.8	15.0	3.6	15.0	6.4	15.0	9.1
600	15.0	1.7	15.0	3.3	15.0	5.8	15.0	8.3

Note: Bearing width a<sub>1</sub> ≤ bearing length b<sub>1</sub>

# Design Chart

# Edge Distances

## Reinforced Concrete Construction

The edge distances to the concrete members have to be strictly adhered to when using elastomeric bearings so as to avoid spalling. In Bulletin 525 the German Committee for Structural Concrete (DAfStb) has specified design criteria for the edge distances on the basis of DIN 1045 – Concrete, reinforced and prestressed concrete structures – Part 1: Design and construction. Please refer to Figure 3 for the denotation of the edge distances:

- a Width of support without joint
- $a_1$  Width of elastomeric bearing
- $a_2$  Distance between bearing and edge of support
- $\Delta a_2$  Tolerance on dimension of the distance between the supporting structural members
- $a_3$  Distance between bearing and the outer edge of the supported structural member
- $\Delta a_3$  Tolerance on dimension of the length of the supported structural member
- $b_1$  Length of elastomeric bearing
- $u_{a,b}$  Sliding distance in the direction of a and b

The minimum dimensions depend on the concrete quality, type of support, type of bearing and of the bearing material; they can be found in tables in the above mentioned Bulletin 525, page 119.

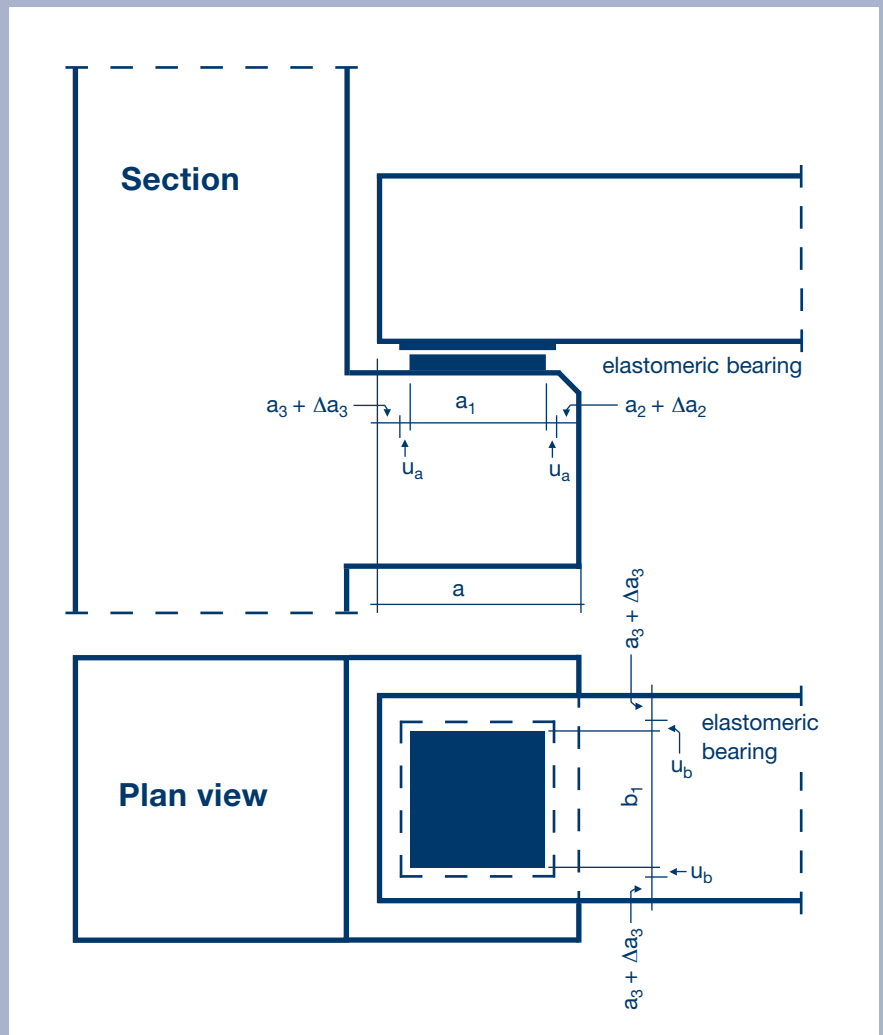


Figure 2. Edge distances for sliding bearings

# Deflection

## Form of Delivery, Dimensions

Ciparall® Sliding Bearings are manufactured and delivered for the specific application.

The bearings can be provided with holes, slotted holes, cut-outs, slits etc. such that dowels and bolts can pass through.

- Ciparall® Sliding Bearing ST  $t$  = 11, 20, 30, 40 mm

### Application for prefabricated construction (BnF):

- Ciparall® Sliding Bearing, ST, BnF  $b_1/b_g \cdot a_1/a_g \cdot t$

### Application for in situ construction (OBn):

For in situ application (OBn) the bearing is provided with a protective cover

$b_1$  and  $a_1$ : length and width of bearing.

$b_g$  and  $a_g$ : length and width of Slide plate

$t$ : total thickness

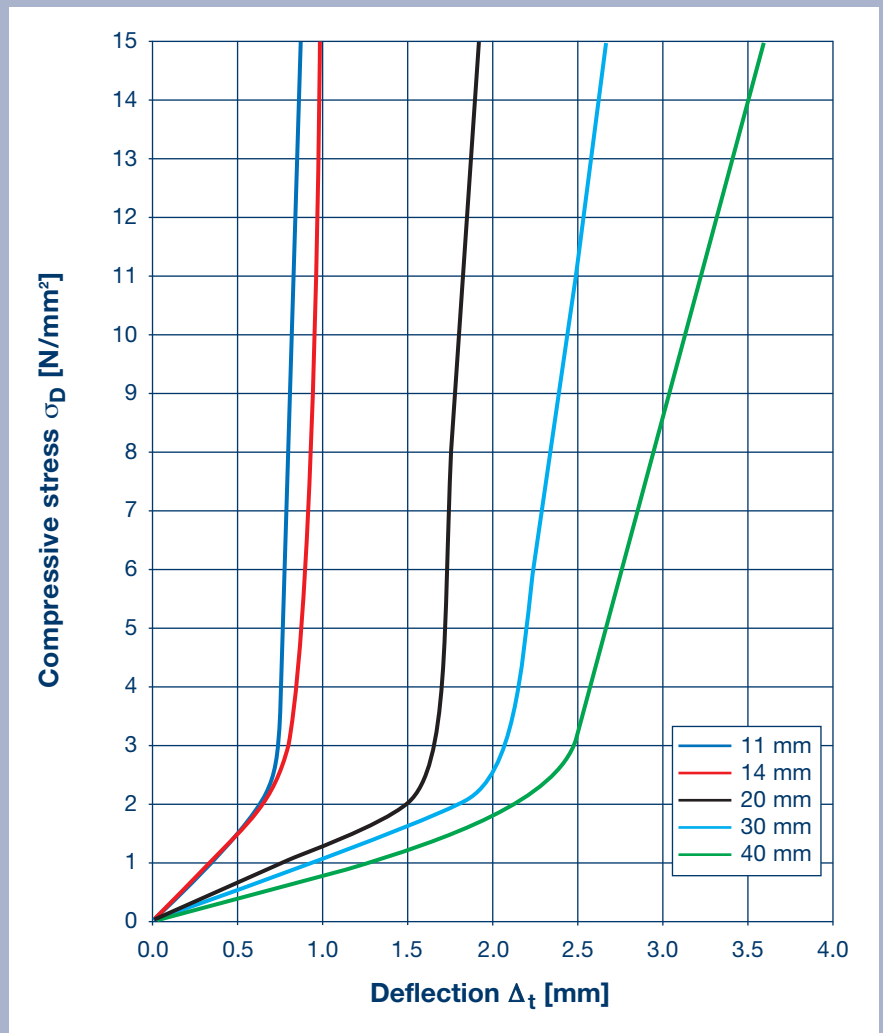


Figure 3. Ciparall® Sliding Bearing, deflection (approximately) related to bearing size 150 mm x 150 mm

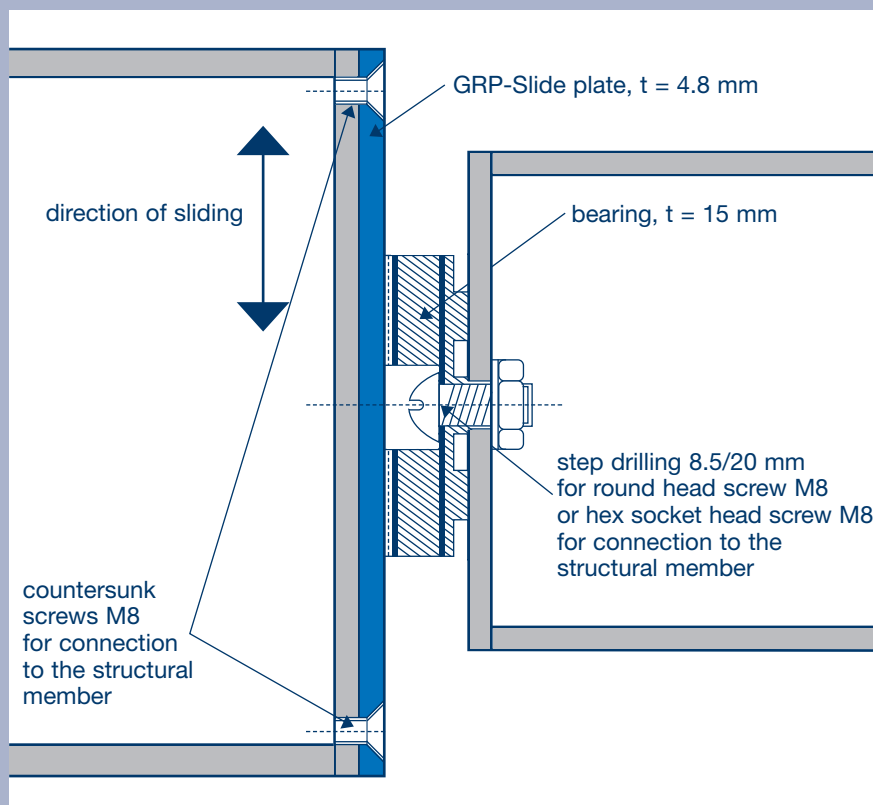


Figure 4. Example of a Ciparal® Sliding Bearing ST, t = 20 mm, vertical joint between two structural steel members and connection of the individual bearing components to the adjacent structural members

### References (excerpt)

#### Schools, Educational Centres, Sport Facilities

- University of Applied Science, Bochum
- Electrotechnical Institute, Technical University Berlin
- Medical Department, Göttingen
- Kölnarena, Cologne
- Olympic Stadium, Berlin
- Westphalia Stadium, Dortmund
- Central Stadium, Leipzig

#### Industrial, Administrative, Service Buildings

- City Gallery, Augsburg
- New Town Hall, Göttingen
- Federal Printing Office, Berlin
- Pegel Tower, Goitzsche
- Federal Chancellery, Berlin
- MDR Head Office, Leipzig
- Airport Parking Garage, Leipzig
- Infineon, Dresden
- Trade Fair Hannover
- Trade Fair Frankfurt/M.
- Natural Thermal Spring, Templin
- Ostseehalle, Kiel
- Airport Hamburg, Terminal 2/3
- Warnow Park, Rostock

#### Abroad

- NCO-Exhibition Halls, Riyadh, Arabia
- Kinali-Sakarya-Motorway, 2. Bridge across the Bosphorus
- IKEA, Warsaw
- Old Brewery, Poznan, Poland
- Scottish Parliament, Edinburgh, Scotland
- Main-Bowl-Stadium, Lagos, Nigeria

## Vertical Installation

# Texts of Tender Documents

## Calenberg Ciparall® Sliding Bearing ST for BnF or OBn

Deliver with transverse tensile reinforcement as well as dimensionally stable sliding plane and permanently elastic flexible pad; bearing capacity up to 15 N/mm<sup>2</sup> depending on size, general building authority test certificate No. P-852.0290-4.

Dimensions:  $b_1/b_g \cdot a_1/a_g \cdot t$

Quantity ..... item

Price ..... €/item

Supplier:  
Calenberg Ingenieure GmbH  
Am Knübel 2-4  
D-31020 Salzhemmendorf  
Phone +49 (0) 51 53/94 00-0  
Fax +49 (0) 51 53/94 00-49

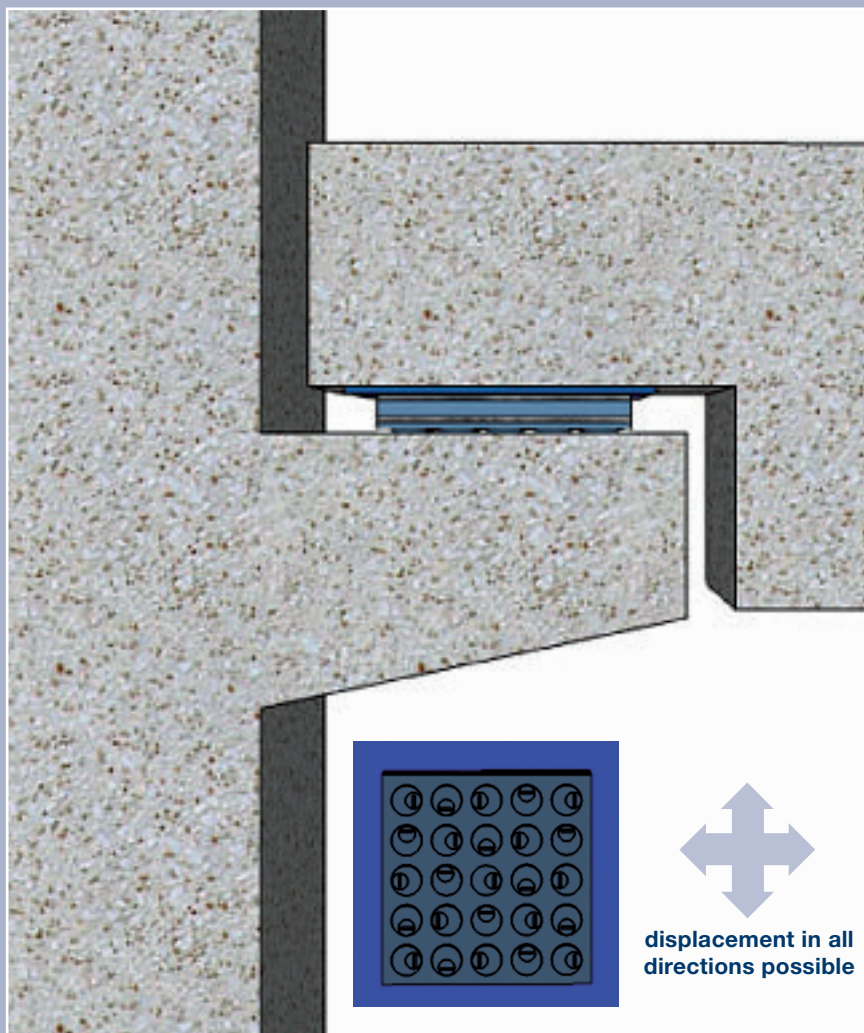


Figure 5. Installation principle, the required edge distances have to be complied with (see page 6)

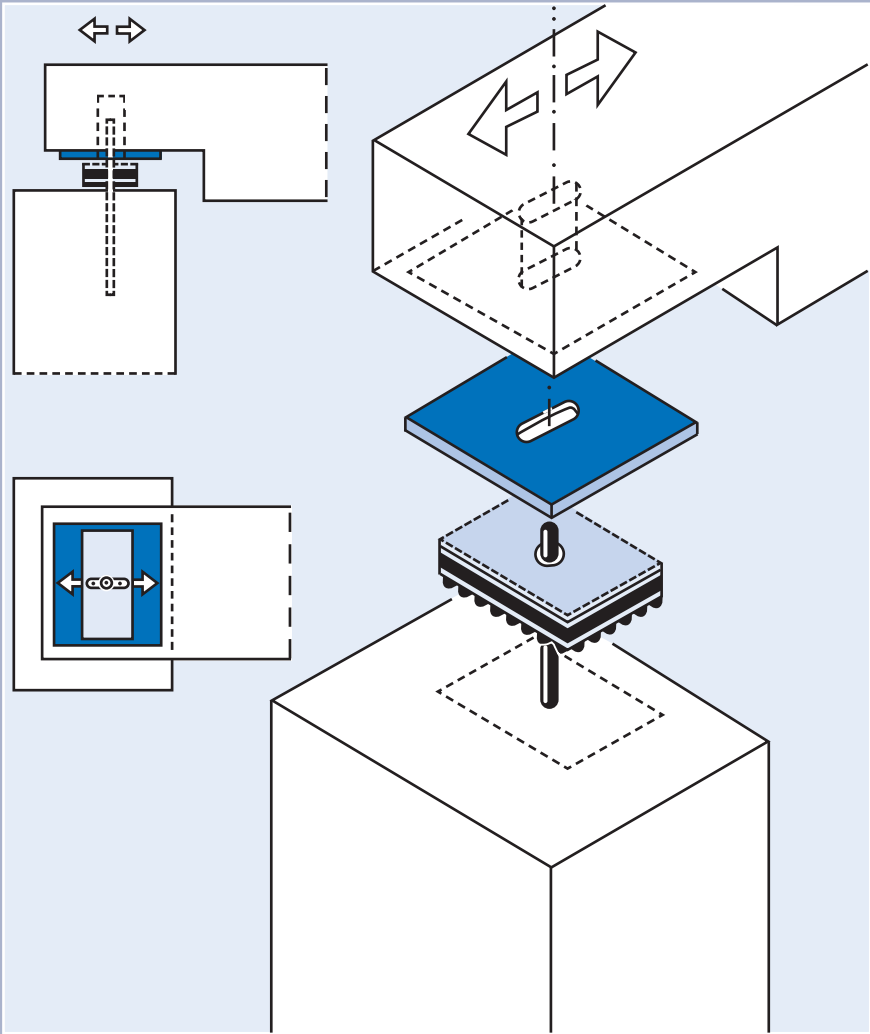


Figure 6. Installation of Ciparall® Sliding Bearing with bore hole and slotted hole

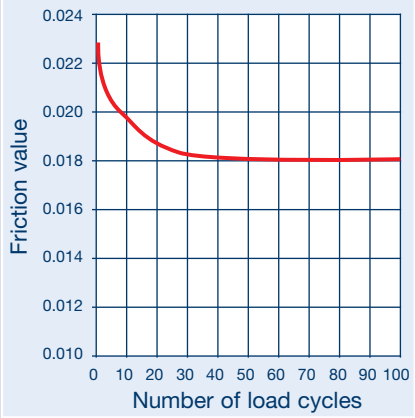


Figure 7. Friction values for Ciparall® Sliding Bearing, values as a function of load cycle number after stop times are terminated

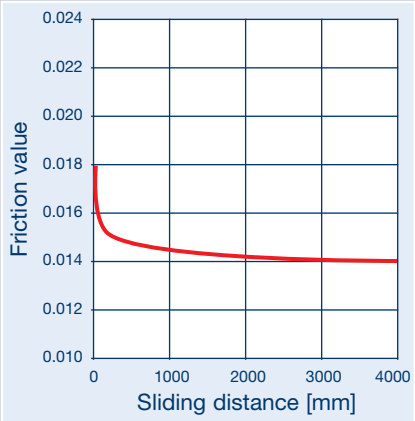


Figure 8. Sliding friction for Ciparall® Sliding Bearing, values as a function of total sliding distance after stop times are terminated

# Friction Values



# Test Certificates

■ General building authority test certificate no. P-852.0290-4; basic investigation for classification of Ciparall® Sliding Bearings according to DIN 4141, part 3, accredited Material Testing Authority for materials in mechanical engineering and plastics, Technical University Hanover, 2003

■ Fire safety assessment no. 3799/7357-AR; assessment of Calenberg elastomeric bearings regarding classification into the fire resistance class F 90 or F 120 according to DIN 4102 part 2 (issued 9/1977); accredited Material Testing Authority for Civil Engineering at the Institute for Construction Materials, Reinforced Concrete Construction and Fire protection, Technical University, Braunschweig; March 2005

## Fire Behaviour

For all applications of elastomeric bearings which have to comply with fire protection requirements the fire safety assessment no. 3799/7357-AR- of the Technical University of Braunschweig applies. It specifies minimum dimensions and other measures in accordance with the specifications of DIN 4102-2, Brandverhalten von Baustoffen und Bauteilen (Fire behaviour of construction materials and components), 1977-09.

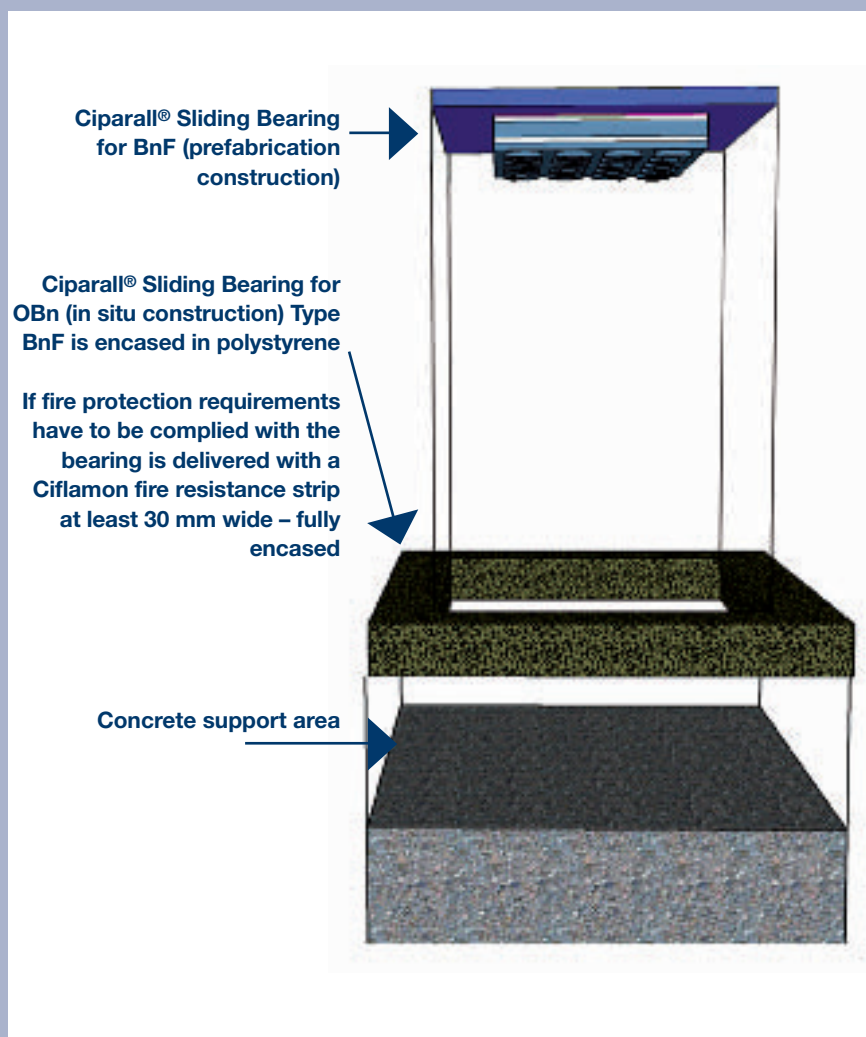


Figure 9. Installation principle of type BnF or OBn on a concrete column

The contents of the publication in the result of many years of research an experience gained in application technology. All information is given in good faith; it does not represent a guarantee with respect to characteristics an does not exempt the user from testing the suitability of products and from ascertaining that the industrial property rights of third parties are not violated. No liability whatsoever will be accepted for damage – regardless of its nature and its legal basis – arising from advice given in this publication. This does not apply in the event that we or our legal representatives or our management are found guilty of having acted with intent or gross negligence. The exclusion of liability applies also to the personal liability of or legal representatives and employed in performing our obligations.

## Calenberg Ingenieure GmbH

Am Knübel 2-4  
D-31020 Salzhemmendorf  
Phone +49 (0) 5153/94 00-0  
Fax +49 (0) 5153/94 00-49  
info@calenberg-ingenieure.de  
<http://www.calenberg-ingenieure.de>