

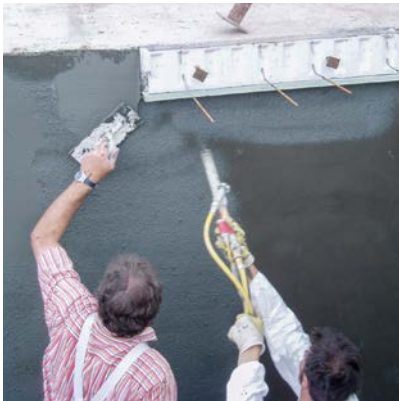


Top-Innovator
2019

BPA-CEMdicht 3 in 1

ACTIVE MINERAL WATERPROOF SEALING SLURRY
SOLUTIONS FOR BELOW GROUND REINFORCED CONCRETE
CONSTRUCTIONS, FOUNDATIONS AND TUNNELS

APPLICATION AND INSTALLATION



Application of BPA-CEMDicht 3 in 1 by spraying.



Application of BPA-CEMDicht 3 in 1 by brushing.



Application of BPA-CEMDicht 3 in 1 by troweling.

FIELDS OF APPLICATION OF THE ACTIVE MINERAL WATERPROOF SEALING SLURRY

- Sealing of vertical below ground concrete structures
- External waterproofing of concrete walls (suitable for subsequent installation)
- Sealing of concrete slabs and foundation surfaces
- Application may include structures under internal intermittent hydrostatic pressure during construction work
- Sealing of vertical splash water zones at wall bases
- Application includes cross-sections of walls and concrete slabs
- Water tanks may be sealed against internal hydrostatic pressure
- Internal waterproofing against external hydrostatic pressure (suitable for subsequent installation)



ACTIVE EXTERNAL SURFACE PROTECTION

BPA-CEMdicht 3 in 1 is a grey mineral waterproof-sealing slurry. It can be applied by brushing, troweling or spraying. It is specially designed for the protection of reinforced concrete constructions against ground dampness, pressurized and non-pressurized water.

BPA-CEMdicht 3 in 1 can be applied on reinforced concrete, solidly filled masonry brick work and cement plaster. BPA-CEMdicht 3 in 1 is suitable as waterproofing underlayment for floor screeds, plasters, tiles and slabs.

BPA-CEMdicht 3 in 1 means one base dry mortar which, with the addition of the Flex or Flex + liquids, produces three different end products as well as multiple potential applications:

- Dry mortar + water = “stiff” mineral waterproof sealing slurry
- Dry mortar + BPA-CEMdicht flex = “flexible” waterproof sealing slurry
- Dry mortar + BPA-CEMdicht flex+ = “flexible + crystalline” waterproof sealing slurry

In combination with the liquid component BPA-CEMdicht flex the mineral sealant slurry becomes so flexible that it can be applied to highly stressed, crack-prone surfaces. The liquid component CEMdicht flex+ additionally has crystalline characteristics. BPA-CEMdicht 3 in 1 has a General Building Code Test Certificate (abP)

ADVANTAGES OF THE ACTIVE MINERAL WATERPROOF SEALING SLURRY

- By adding various liquid components 3 different forms of application can be covered with one basic powder
- Easy handling: the end product may be brushed, troweled or sprayed
- Can be used internally and externally
- Can be applied to highly stressed, crack-prone surfaces (flex and flex+)
- Active mineralizing and crystallizing waterproof sealing slurry by adding BPA-CEMdicht flex+
- Can be used in pressurized and non-pressurized water situations

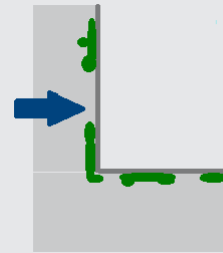


PRODUCT VARIATIONS

BPA-CEMdicht 3 in 1 Powder

DRY MORTAR + WATER

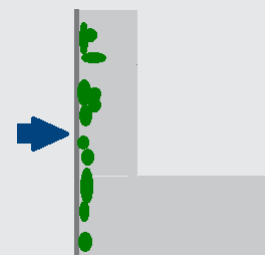
CEMdicht 3 in 1 "stiff" is an active mineralizing, stiff waterproof sealing slurry. Designed for use with positive and negative water pressure. Stiff, active waterproof sealing slurry coating



BPA-CEMdicht 3 in 1 flex

DRY MORTAR + BPA-CEMDICHT FLEX

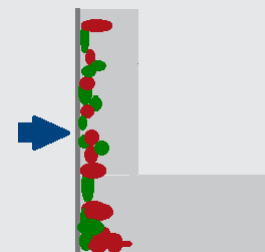
Active, mineralizing, flexible waterproof sealing slurry. Designed for use as external, crack-bridging sealing in positive water pressure.



BPA-CEMdicht 3 in 1 flex+

DRY MORTAR + BPA-CEMDICHT FLEX+

Active, mineralizing and crystallizing, flexible waterproof sealing slurry. Designed for use as external, crack-bridging sealing in positive water pressure.



FORM OF DELIVERY AND STORAGE

Standard Containers

Dry mortar available in bags, BPA-CEMdicht flex and flex+ in plastic canisters

Special Containers

Ready-made bucket with dry mortar and required amount of BPA-CEMdicht flex or flex+ in plastic canister

Storage

Shelf life approx. 6 months when stored in dry conditions, frost-free and protected against direct sunlight

INNOVATIVE, TESTED AND APPROVED

Our products are independently certified by bodies such as the British Board of Agrément (BBA), MPA Braunschweig, MPA Stuttgart, MPA Leipzig, DIBT (Germany), and Vattenfall Sweden. BPA-CEMdicht 3 in 1 Active Mineral Waterproofing Slurry meets the German General Building Code Test Certificate Standard. Relevant test reports and accreditations are available on request.

Our quality management system is accredited in accordance with the worldwide accepted standard DIN EN ISO 9001:2015. This accreditation guarantees the consistent,

high quality of all BPA-products. Our global success is based on our continuous strive for excellence and our long lasting focus on improving construction techniques and performance by developing products that are easy to use and meet the performance criteria required to satisfy the most stringent construction standards worldwide. Due to this strong focus on developing high-quality systems and products we have been awarded a place in the TOP 100 Innovative Companies in Germany for two years in a row.



IN USE WORLDWIDE

For many years we have been active in the production and international sales of our innovative Mineral Waterproofing Sealing Slurry BPA-CEMdicht. Due to the simple and efficient application options products made by BPA

are first choice for the durable and fail-safe protection of below ground reinforced concrete constructions and tunnels world-wide.

Please, find a small excerpt of our references below:



Aviva Stadium
Dublin | Ireland



Bjørvikatunnel
Oslo | Norway



Wankdorf-Stadium
Bern | Switzerland



Tunnel
Küblis | Switzerland

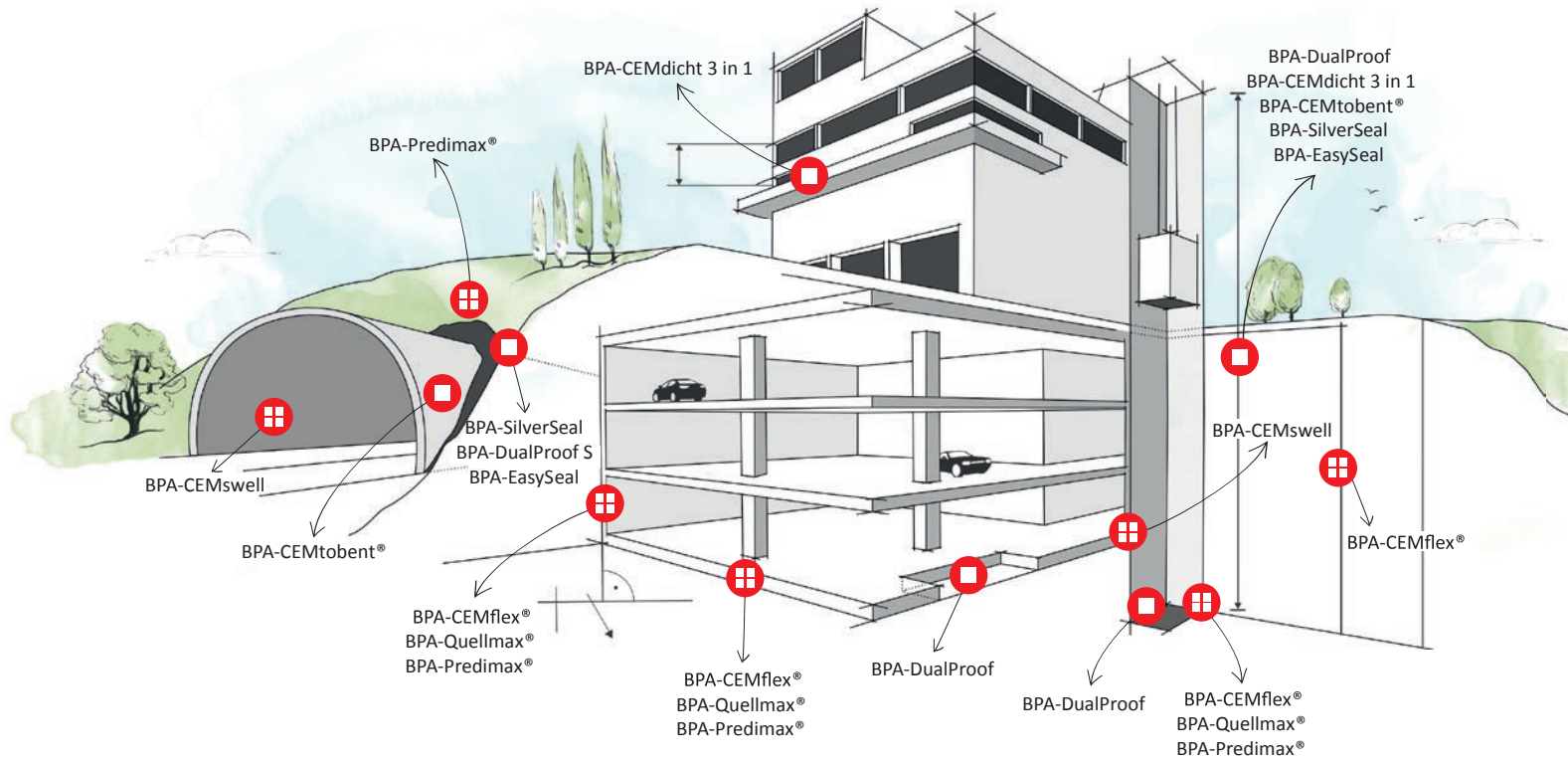


Train Station
Zürich | Switzerland



Train Station S21
Stuttgart | Germany

FURTHER PRODUCTS AND THEIR FIELDS OF APPLICATION MADE BY BPA



 Joint Sealing

 External Surface Waterproofing



BPA
WATERPROOFING SYSTEMS

BPA GmbH
Behringstraße 12
D-71083 Herrenberg
TEL +49 (0)7032 89 399 - 0
FAX +49 (0)7032 89 399 - 29
MAIL info@BPA-waterproofing.com

www.BPA-waterproofing.com

Presented by:

BPA Distribution Partner