



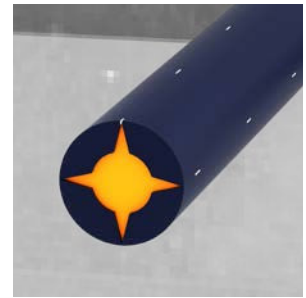
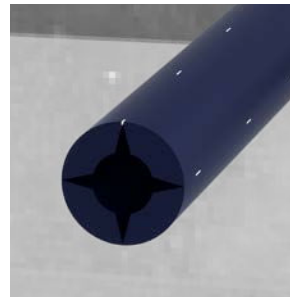
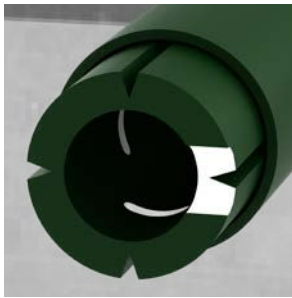
# BPA-Predimax<sup>®</sup> 11/19

# BPA-CEM 11/19

INJECTION HOSE SYSTEMS

SOLUTIONS FOR BELOW GROUND REINFORCED CONCRETE  
CONSTRUCTIONS, FOUNDATIONS AND TUNNELS

# FUNCTION OF THE INJECTION HOSE SYSTEM



## BPA-Predimax® 11/19

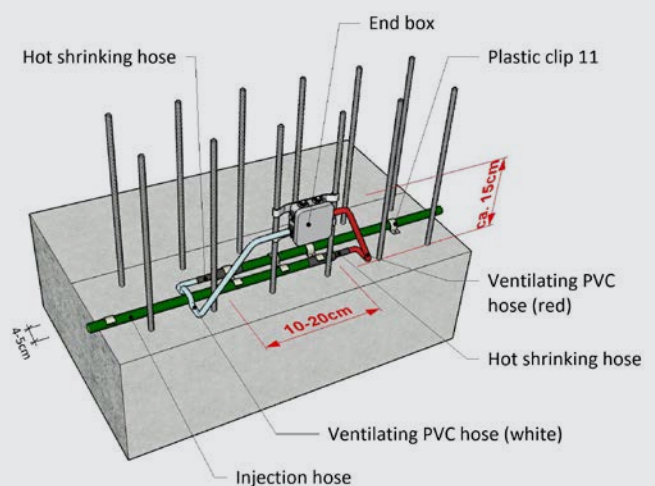
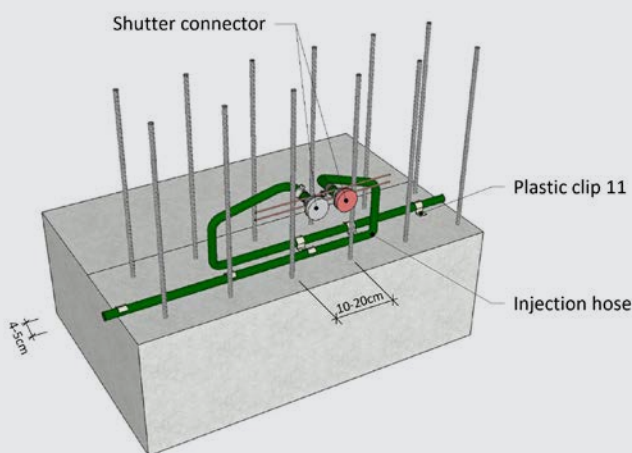
The double-jacketed injection hose consists of an inner core with big slots for the injection material and an outer PVC-sleeve. The PVC outer sleeve has perforations that are offset to the slots on the inner core.

This unique design prevents any fresh concrete paste from entering and blocking the BPA-Predimax® Injection Hose System.

## BPA-CEM 11/19

BPA-CEM 11/19 is a single-wall injection tube with slightly cone shaped openings. The smooth surface of the injection tube prevents any unwanted bonding between the tube and the concrete, therefore the BPA-CEM 11/19 Injection Tube System allows the joints to be easily injected with any resin. If required an injection can be carried out at a later stage due to the smooth surface of the tube preventing any sintering of the system.

# INSTALLATION EXAMPLE



The installation surface should be trowel finished, sound, clean and free from contamination and failures. Our Injection Hose Systems BPA-Predimax® are normally installed in suitable lengths up to approximately 10 m. The hose/tube should be secured on the hardened concrete along the middle of the cold joint. Overlaps of the hoses should be 10–20 cm. To ensure that the hose does not float in the fresh concrete during the casting process, it should be fastened in place with the fixings as provided at intervals of approx. 20–25 cm.

Our Injection Hose Systems can be installed with ventilation hoses that are securely fastened in an end box or with shutter connectors with rubber plates and rebar holders. End box or shutter connectors must be placed outside of the formwork so they can be easily accessed.

# ACTIVE JOINT PROTECTION



**Our high-quality Injection Hose Systems with General Building Test Code Certificate have been specially designed for the protection of horizontal and vertical construction and cold joints in below ground reinforced concrete constructions, foundations and tunnels against potential and active leaks.**

Our Injection Hose System can be re-injected to prevent leaks caused by settlement or structural movement. BPA Predimax Systems are formulated to be durable, robust and fully resistant to continuous immersion in ground water, saline, sewage, alkalis, acids, petrol, diesel and alcohol. BPA-Predimax® 11 is suitable for injection with all PU/EP resins, acrylates, gels, fine and microfine cement. BPA-Predimax® 19 suitable for injection with all PU/EP resins, acrylates, gels, fine and microfine cement and Portland cement.

## ADVANTAGES OF OUR INJECTION HOSE SYSTEMS

- Sufficient cross section of the duct (reducing inner friction of injection material thus allowing for economic compression lengths) and permeability of the compression duct and outlet openings after concreting.
- Unique design prevents fresh concrete paste from entering the system during concrete placement.
- Durable and robust, maintenance-free system
- Ease of use, simple installation even at complicated details
- Circular hose, no unwanted twisting when installing from the reel
- Suitable for operation even under low injection pressure.
- Smooth surface prevents bonding between injection hose and concrete
- Economic



# PRODUCT VARIATIONS



## **BPA-Predimax® 11/19**

INJECTION HOSE SYSTEM

BPA-Predimax® Injection Hose System is a double-jacket PVC hose. This patented high-quality system with General Building Test Code Certificate is suitable for the sealing of construction and cold joints of below ground reinforced concrete constructions, foundations and tunnels.



## **BPA-CEM 11/19**

INJECTION TUBE SYSTEM

BPA-CEM11/CEM19 is a cost-effective, high-performance Injection Tube System. The single-wall BPA-CEM with General Building Test Code Certificate is suitable for the sealing of construction and cold joints of below ground reinforced concrete constructions, foundations and tunnels.

# ACCESSORIES



**Hot-Shrinking Hose**



**Plastic Connector**



**Ventilation Hose  
+ Sealing Plug**



**Spider**



**Shutter Connector**



**End Box**



**Hose Clamp**



**Plastic Clip**

# FORM OF DELIVERY AND STORAGE

## **BPA-Predimax® 11/19**

**Dimensions / form of delivery** Rolls of 100 m  
Pallet: 10 rolls of 100 m

**Storage** Shelf life 5 years when stored clean, dry and shaded from sunshine in temperatures > 5°C

## **BPA-CEM 11/19**

Rolls of 50 m  
Pallet: 20 rolls of 50 m

Shelf life 5 years when stored clean, dry and shaded from sunshine in temperatures > 5°C

# INNOVATIVE, TESTED AND APPROVED

Our products are independently certified by bodies such as the British Board of Agrément (BBA), MPA Braunschweig, MPA Stuttgart, MPA Leipzig, DIBT (Germany), and Vattenfall Sweden. BPA-Predimax® Injection Hose Systems meet the German General Building Code Test Certificate Standard. Relevant test reports and accreditations are available on request.

Our quality management system is accredited in accordance with DIN EN ISO 9001:2015. This accreditation guarantees the consistent, high quality of all BPA-products.

Our global success is based on our continuous strive for excellence and our focus on improving construction techniques and performance by developing products that are easy to use and meet the performance criteria required to satisfy the most stringent construction standards worldwide. Due to this strong focus on developing high-quality systems and products we have been awarded a place in the TOP 100 Innovative Companies in Germany for two years in a row.



## IN USE WORLDWIDE

For many years we've been active in the production and international sales of our innovative BPA-Predimax® and BPA-CEM Injection Hose Systems.

Due to the simple and efficient application options products made by BPA are first choice for the durable and fail-safe

protection of below ground reinforced concrete constructions and tunnels worldwide.

Please find a small excerpt of our international reference list below:



**Aviva Stadium**  
Dublin | Ireland



**Bjørvikatunnel**  
Oslo | Norway



**Wankdorf-Stadium**  
Bern | Switzerland



**Tunnel**  
Küblis | Switzerland

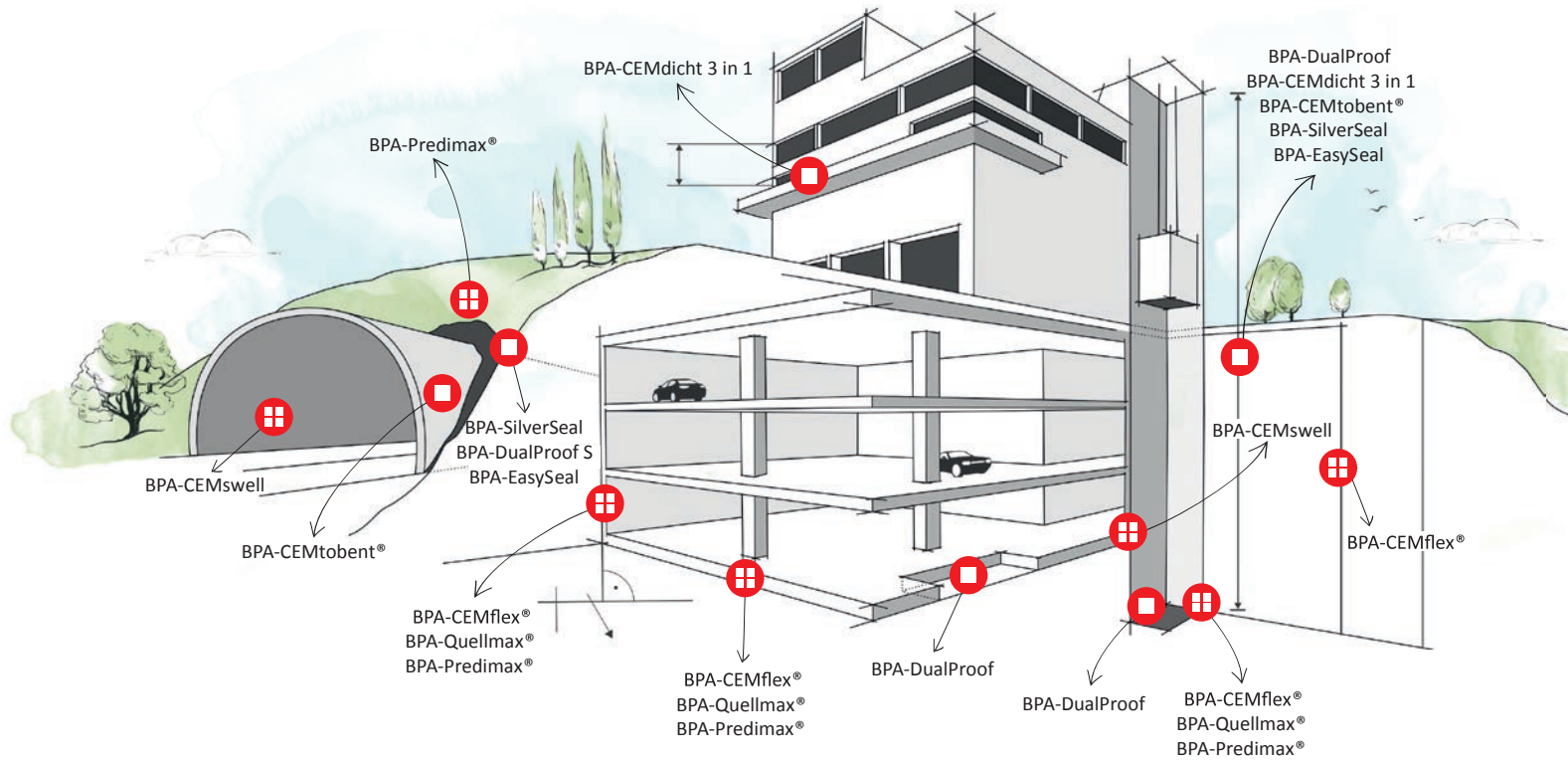



**Train Station**  
Zürich | Switzerland



**Train Station S21**  
Stuttgart | Germany

# FURTHER PRODUCTS AND THEIR FIELDS OF APPLICATION MADE BY BPA



 Joint Sealing

 External Surface Waterproofing



**BPA**  
WATERPROOFING SYSTEMS

BPA GmbH  
Behringstraße 12  
D-71083 Herrenberg  
TEL +49 (0)7032 89 399 - 0  
FAX +49 (0)7032 89 399 - 29  
MAIL info@BPA-waterproofing.com

[www.BPA-waterproofing.com](http://www.BPA-waterproofing.com)

Presented by:

**BPA Distribution Partner**