

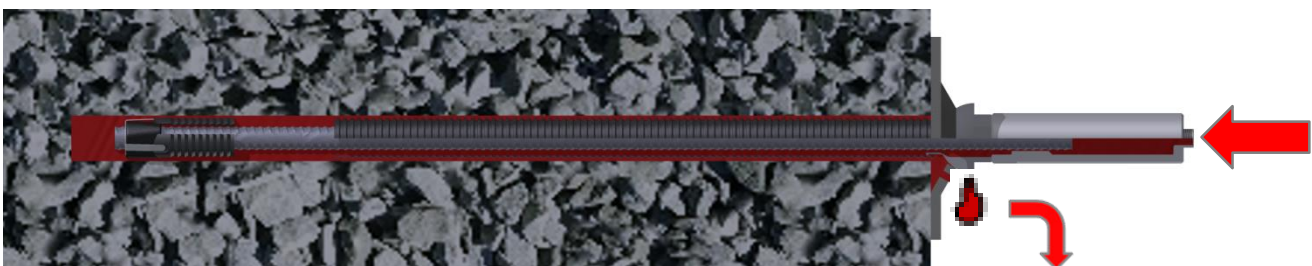
Rapid Grout Bolt (RG Bolt) INSTALLATION



Bolt installation in the borehole



Drill a borehole with a diameter of 48 - 52 mm and at least an equal length of the bolt. Put the RG Bolt into the hole and activate the expansion shell by turning the nut. Immediate rock support is now given through the combination of activated expansion shell, bar, nut and anchor plate.



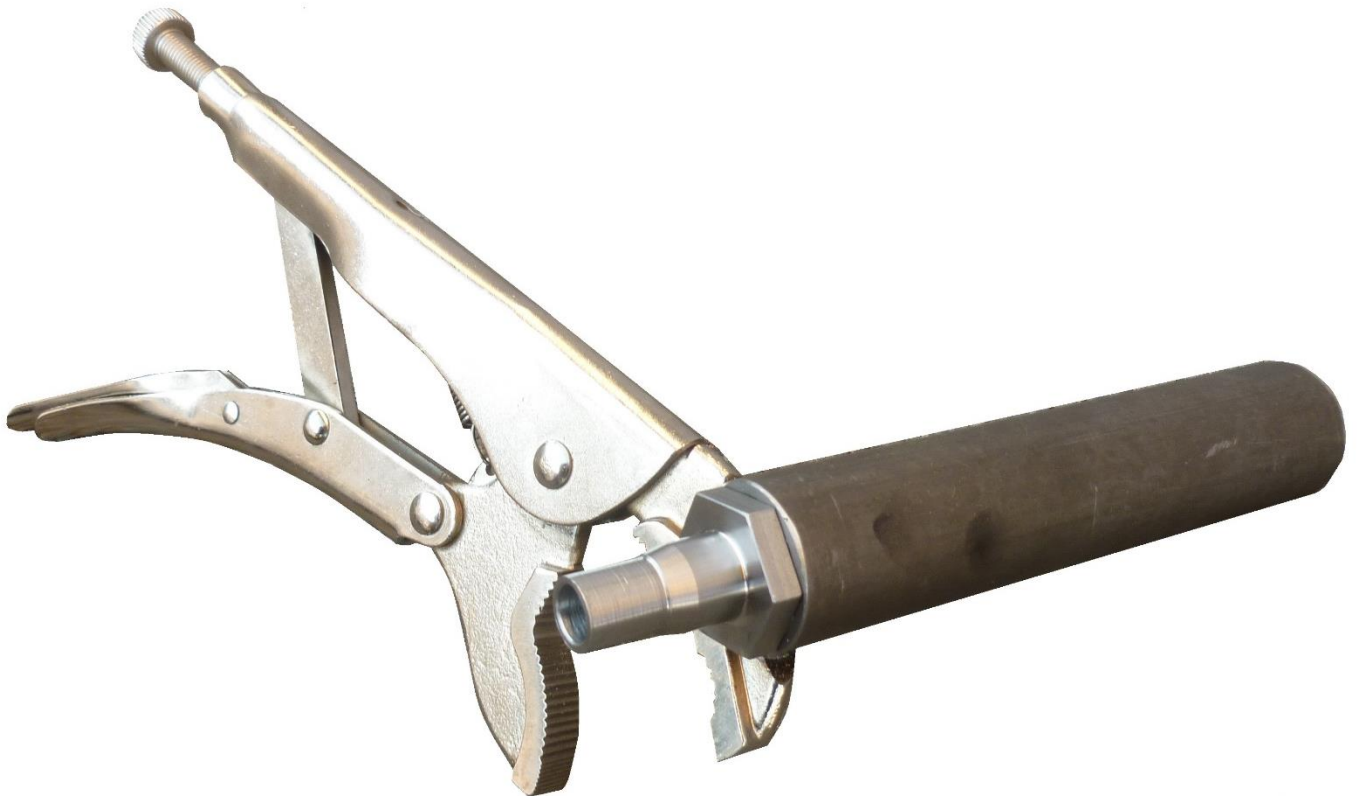
Start grouting process. Finish grouting process when grout flows out of the vent hole of the anchor plate. Optionally a sealing between bore hole and anchor plate is available.

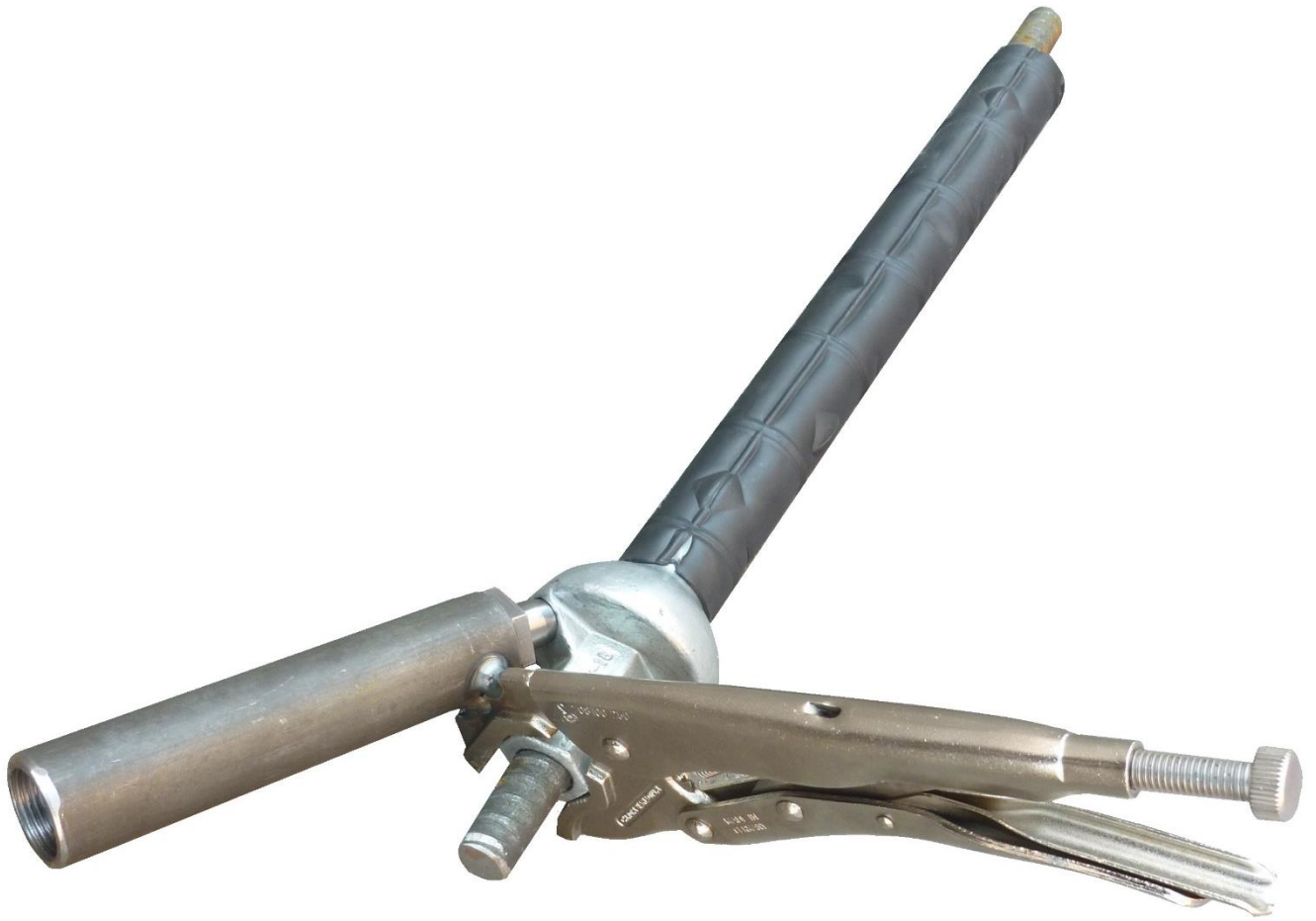
RG Bolt injection system injection channels

The SAS RG Bolt is injected via an injection channel from the outer side of the nut



Injection adapter TR6022-18/22 for the injection channel





The injection nozzle is welded on a pliers. After inserting the nozzle into the injection channel the pliers is pressed and thereby the nozzle is fixed in the channel. The grouting process can be started.



RG Bolt injection system injection slots (only for Ø22)

The SAS RG Bolt is injected via three injection slots in the inner side of the nut:



To inject there are two types of injection adapters available:

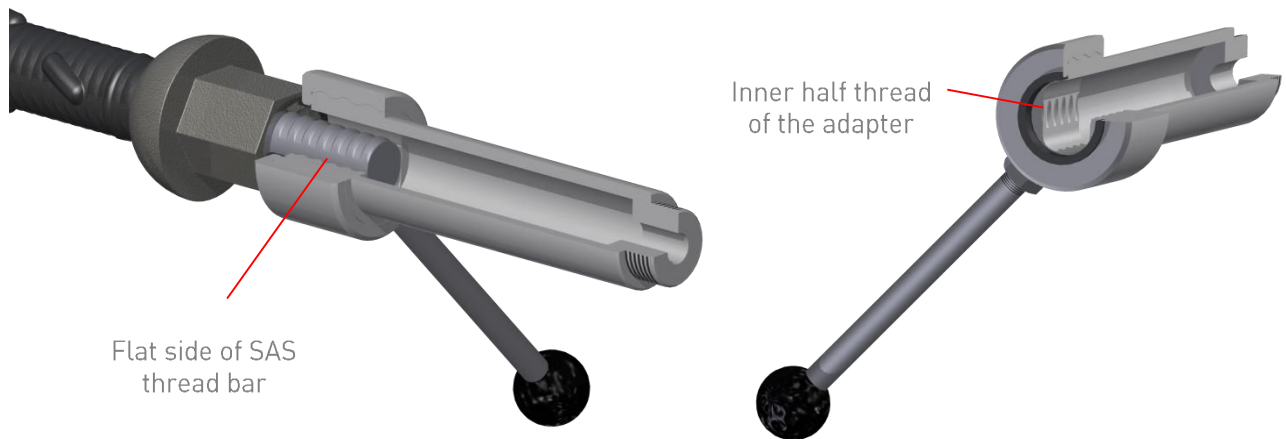
"PUSH-FIT" injection adapter TR6020-22 (injection via two injection slots in the inner side of the adapter)



SCREWABLE injection adapter TR6021-22 (injection via three injection slots at the inner side of the adapter)



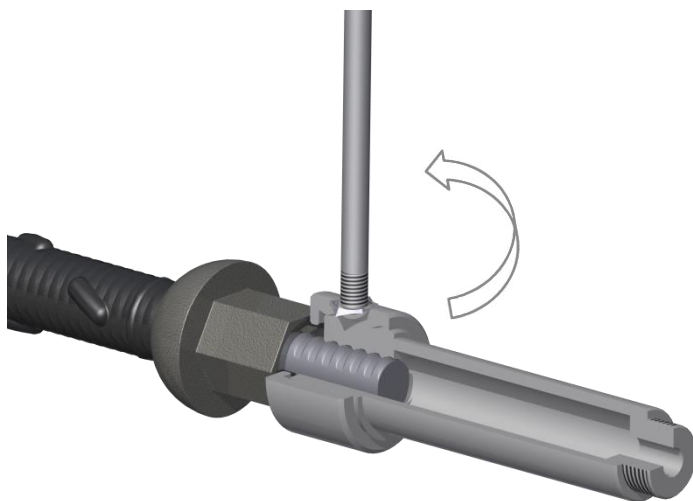
Use of the "PUSH-FIT" injection adapter TR6020-22



Push the injection adapter above the SAS thread bar shortly before the injection nut. The position of the inner thread of the adapter has to be above the flat side of SAS thread bar.

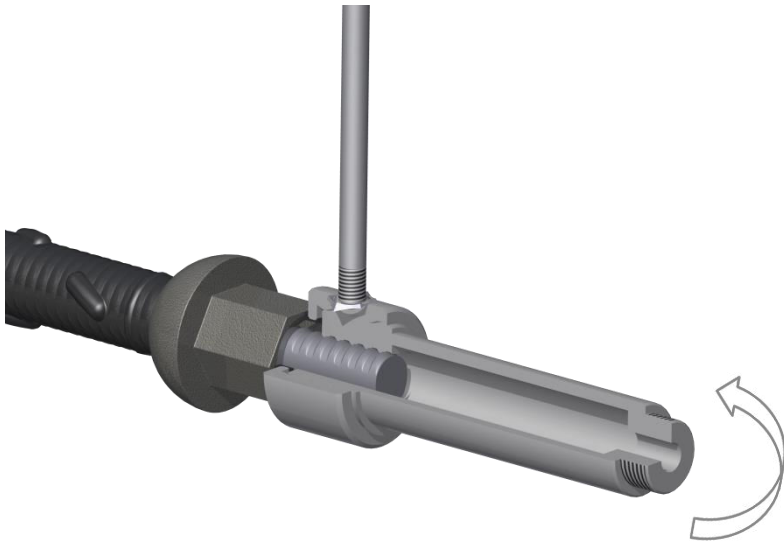


Turn the whole adapter 90°. The inner ribs of the adapter are now interlocked and the adapter is firmly connected with the SAS RG Bolt.

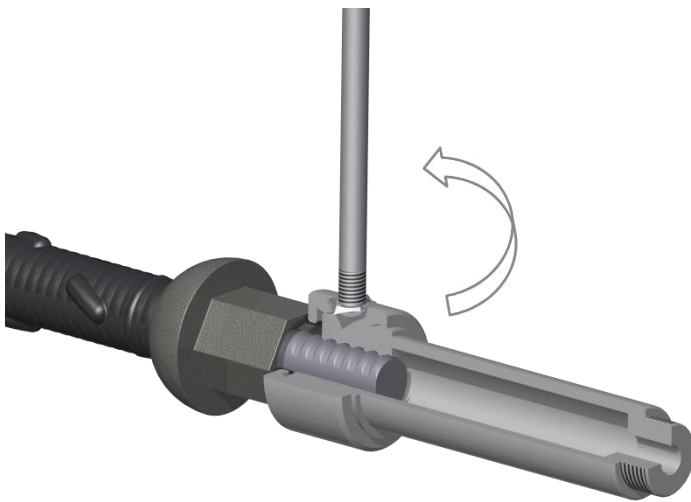


Turn the screw part of the adapter by using the integrated lever. Now the adapter is firmly and tightly connected with the injection nut of the RG bolt and ready for grouting.

Use of the SCREWABLE injection adapter TR6021-22



Screw the injection adapter above the SAS thread bar shortly before the injection nut. The position of the inner thread of the adapter has to be above the flat side of SAS thread bar.



Turn the screw part of the adapter by using the integrated lever. Now the adapter is firmly and tightly connected with the injection nut of the RG bolt and ready for grouting. The sealing guarantees that no grout sprinkles out.